

Racing by Local Governments In Japan

2016



INDEX

A brief history of horse racing in Japan	1
Races and racecourses	4
Promotion	10
The National Association of Racing (NAR)	16
Friendly international exchange	20
Ban-ei (Draft Horse Racing)	23
Attendance and Turnover in 2016	24
The listed races by local governments in 2016	25



A brief history of horse racing in Japan

Presently, horse racing in Japan is classified into 2 categories: racing conducted by the Japan Racing Association (JRA), and racing conducted by local governments on the prefectural and municipal level. JRA racing provides revenue to the national treasury, and racing by local governments provides revenue to certain designated local governments.

European-style horse racing introduced in Japan at the end of the Edo Period

It was in 1861, towards the end of the era of the Tokugawa Shogunate, that Western-style horse racing was introduced into Japan. The first race was conducted in Yokohama under the auspices of the Yokohama Race Club which was formed by a group of foreign residents of that city. This was followed by Western-style races in

Tokyo and Hakodate. In 1888, with Japan Race Club (formerly Yokohama Race Club) having put for the first time in Japan one-dollar betting tickets on sale for club-sponsored races in Yokohama, the popularity of Western-style racing grew throughout the country.

Roots of racing by local governments

Racing by local governments developed mainly as a form of public entertainment, from the ceremonial horse racing which had been dedicated since ancient times to local temples and shrines at festivals around Japan.

The recorded history of racing in Japan can be traced as far back as 701 A.D., during the reign of the Emperor Mommu. As time passed, horse racing developed into such Imperial Court-sponsored forms as “*Kurabe-uma*” (“match races”) at *Butokuden* Pavilion, races for religious ceremonies at Kyoto’s *Kamo Jinja*, and other shrines, and road races sponsored by court nobles.



HISTORY OF RACING IN JAPAN



19th century race before the emperor MEIJI at UENO Park in TOKYO

Toward the end of the Tokugawa Shogunate era in 1861, the first European –type horse race in Japan took place in Yokohama under the auspices of the Yokohama Race Club which was formed by a group of foreign residents in Yokohama. This was followed by races in Hakodate and Tokyo. In 1888, the Japan Race Club which was evolved from the Yokohama Race Club put one dollar pari-mutuel tickets on sale for club-sponsored races in Yokohama for the first time in Japan.

Racing by Local Governments – An overview



Flourishing under a New Post-War System

A new Horse Racing Law was promulgated after World War II, in 1948. With the dissolution of the Japan Racing Society, which had been established through the unification of a number of race clubs, and which had exclusively operated horse racing in Japan, horse racing which had thus far been officially approved was changed over to a nationally operated form of racing under the direct control of the national government. After that, in 1954, the government established JRA, a semi-governmental corporation, to conduct all aspects of horse racing. This has since developed into the horse racing which is conducted by JRA today. On the other hand, in accordance with the new Horse Racing Law promulgated in 1948, races conducted by private equine organizations at that time were placed under the direct jurisdiction of local governments. In other words, these races were what are referred to today as “racing by local governments”. The operation of horse racing has been changed from the control of private equine organization to that of local governments.

With the revision of the Horse Racing Law in 1962, the National Association of Racing (NAR) was established.

The operation of racing by local governments has been unified, and its foundation made more firm through the establishment of NAR.


Races and racecourses

Structure of horseracing by local governments

Racing by local governments consists of 14 local governments located throughout the country, which serve as organizers of the races held within their jurisdiction. These 14 local governments are comprised of 2 prefectural governments, 2 municipals, and 10 joint-organizations.

NAR is the authority that oversees this racing by local governments organized by 14 local governments.

Racecourses

The map shows the location of racecourses in Japan. There are 15 racecourses used for racing by local governments. Of these, the 7 with  are racecourses that hold night races.

The lengths of racecourses of local governments range from between 1,051 meters and 1,600 meters. Their track

width range is from 16 meters to 27 meters and from the home turn to the finish line range is from 194 meters to 386 meters. The maximum number of horses which can run are from between 10 to 16. Thus, they are smaller than JRA courses and bends are comparatively sharp. All of racing by local governments courses have only dirt tracks, with the exception of the Morioka Racecourse.

Fixtures / Racing calendar

There are differences in the schedules of racecourses in the metropolitan areas of Kanto, Tokai, Kansai and Hokkaido, and those of racecourses in other regions. Racecourses in major urban areas and Hokkaido hold their races on weekdays in order to avoid competition with JRA which holds races on Saturdays and Sundays. On the other hand, in regions that are largely unaffected by JRA meetings, our racecourses primarily race on Saturdays and Sundays, when it is easier to attract local fans.

When two or more racecourses are relatively close to each other, the areas they serve become a kind of shared commercial market area. In these cases, therefore, we

coordinate the race schedules to avoid races being held on the same day. We also attempt to boost betting sales by using racecourse on their off-days as off-track sales sites. We also do our best to arrange runners so that racehorses can run in all racecourses within the same market area. In winter, racecourses in Hokkaido and other parts of northern Japan cannot be used for racing due to heavy snowfall. Instead, these are used as off-track sales sites for racecourses in the metropolitan region and other areas. Racehorses belonging to these northern racecourses are also sent to run at racecourses where races are held. This gives local fans more incentive to bet on horses from their own region.



Mizusawa Racecourse

Statistics of Flat Race

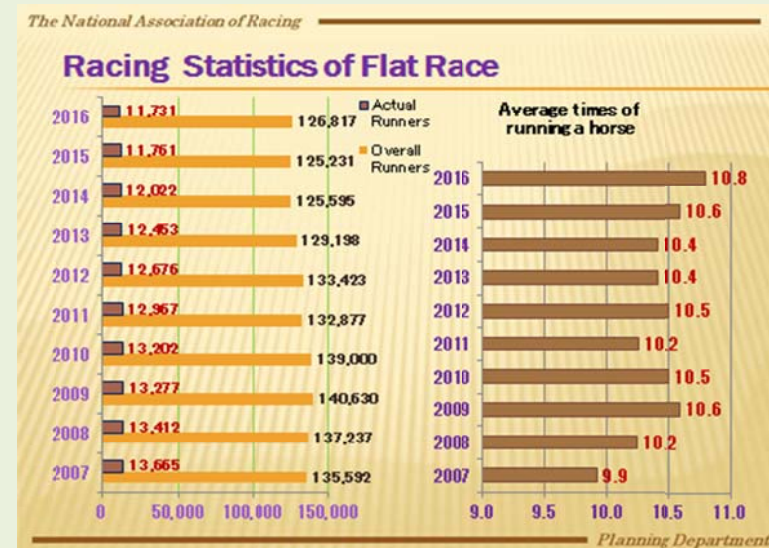
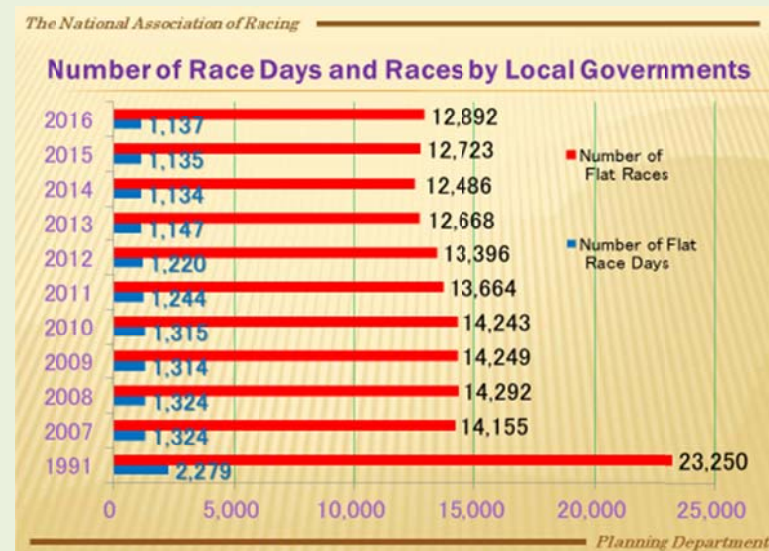
There are many races which attract a lot of attention including listed races with high prize money conducted at various racecourses.

Flat races by local governments were held a total of 1,137 race days with about 12,892 races at 13 racecourses in 2016.

At the Himeji racecourse, there was not holding.

In Iwate prefecture of Tohoku area that suffered serious damage by The Great East Japan Earthquake disaster, there are still many people living in temporary housing, but the Iwate Racing Association revives wonderfully and provides pleasure as the leisure to people.

The number of different horses having run, the overall starts, and the average times of running per year are listed. A total of 126,817 horses ran and the average times of running were 10.8 a horse in 2016.



Attendance & Turnover (Flat Race)

The turnover of these races in 2016 was approximately 461.9 billion yen.

As for the breakdown of the turnover in 2016, 9.6% is from on-course, 29.0% is from off-course, and 61.4% is from telephone and internet betting. The turnover of telephone and internet betting amounted to about 284 billion yen and it is a big factor of increasing. In other words, it shows that the on-course turnover have been decreasing over recent years. The NAR developed a new integrated totalizator system and this system has been connected with JRA's general totalizator center system, so it has been possible to bet on the local government races through a membership of JRA's internet betting system since October 3, 2012.



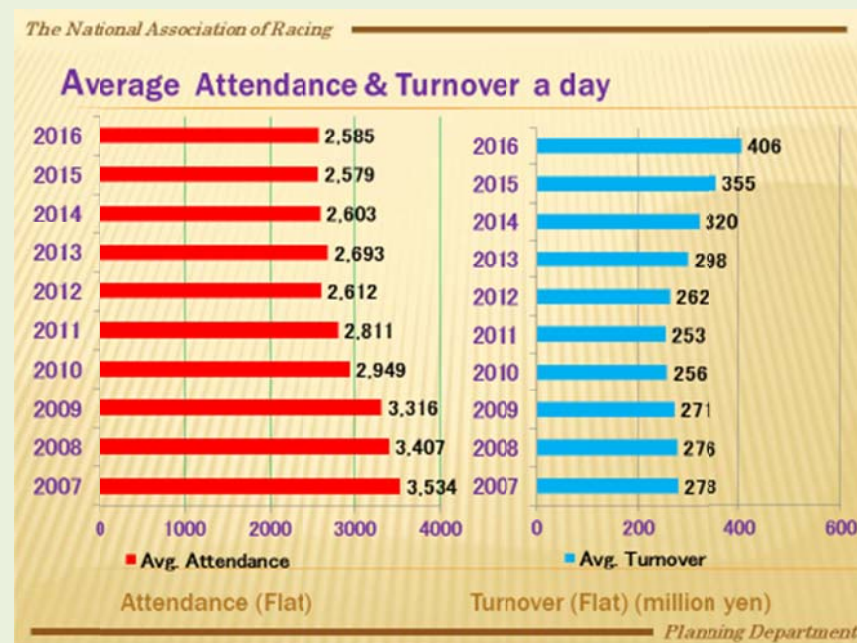
The average attendance for all racing by local government courses per race day was 2,585 (100.2%), with average turnover of 406 million yen (114.4%).

The turnover seems to increase, however, 2016 compared to 1991 fell to about 50%. Gross turnover by racing by local governments as a whole peaked in 1991, when a figure of 982 billion yen was recorded.

And the financial situation remains as harsh as ever.

Reasons for the vast drop in turnover include the increasing diversity of leisure pursuits and a considerable fall in per capital disposable income owing to the protracted stagnation of the Japanese economy.

As a result, 10 organizers withdrew from the racing business during the 13-year period from 2001 to 2013, leading to the sad reality of closure for 13 racecourses.



Off-track sales

Sales at racecourses are decreasing year by year, but off-track sales are conversely in an upward trend. The ratio between racecourse sales and off-track sales stood at 50:50 in 2001, but the ratio of off-track sales has increased greatly year by year since then; in 2016 it was 10:90. In other words, nine-tenths of sales by racing by local governments were furnished off-track.

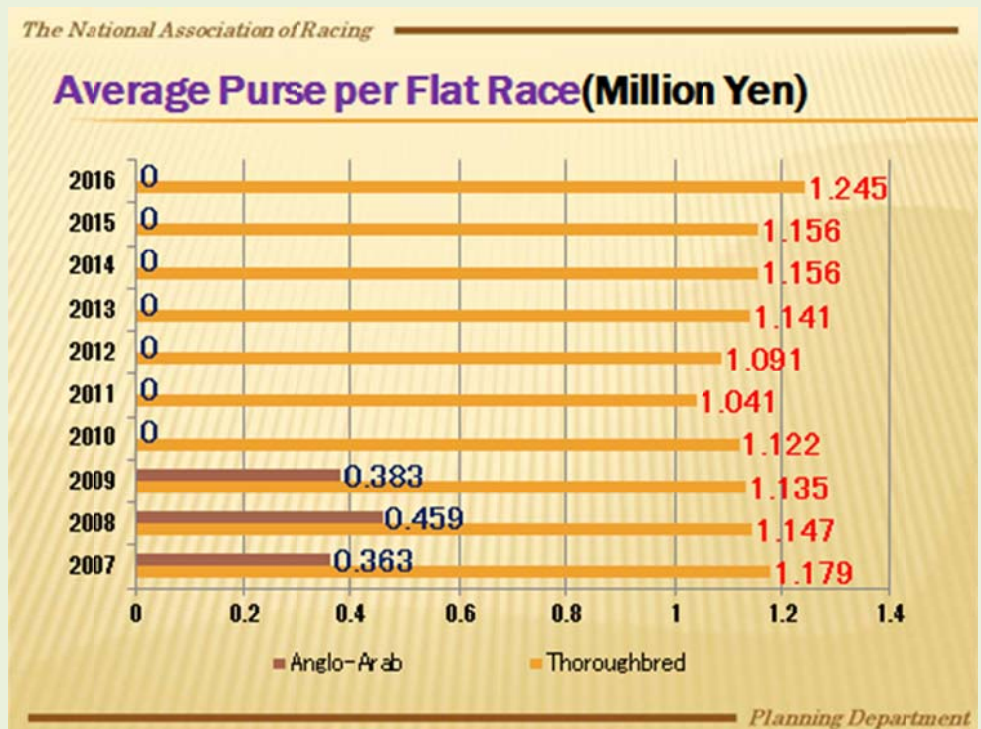
One of the reasons for this is that off-track sales days are on the increase between racecourses. Another is that a nationwide system of sales for listed races featuring high-quality racing has been established.

A third reason is that telephone and online betting have grown dramatically with the development of systems for providing online race video, odds and other information.



Prize money

It shows the average prize money per race for a thoroughbred flat race and an Anglo-Arab flat race. The race by Anglo-Arab has been already abolished. The average prize money per race for thoroughbred flat race is 1.245 million yen. This is half of data of 2000.



The Development of race systems

Traditionally, JRA and racing by local governments held races separately within their circles. However, in more recent years, both sides have begun collaborating and coordinating their efforts to implement exchange race that is intended to promote all areas of horseracing in

Japan. And in 1973, Oi Racecourse held its first invitational race that allows JRA horses to run. Since then, the number of these races has increased.

Furthermore, amid growing momentum toward the establishment of a race system, the Dirt Race Grading Committee was set up in 1996 to make appropriate selections of excellent dirt horses without distinction between JRA and racing by local governments.

As a result, major dirt races throughout the country were ranked and “Graded Dirt Races” came to be implemented. After that, the Japanese Graded Race Committee was set up in 2008, and now both turf and dirt races in Japan are graded by this committee.

In 2016, there were 40 dirt races by local governments which were graded by this committee. And these races are also noted in the International Cataloguing Standards. Ratings of each runner were prepared as a foundation for ranking for Graded Dirt Races and from 1998, each runner was assigned a certain number of pounds in the JPN Thoroughbred Rankings.

Promotion

Collaboration and coordination among racing organizers

—Expansion of commercial market areas—

In the past, organizers of racing by local governments used to take care of betting sales within narrow local areas based on the prefecture when the racecourse was located, as prescribed by the Horse Racing Law. However, the legal requirements and other regulations were eased, since there are limits to sales within an area with a limited population. Now it is the norm for organizers of racing by local governments in neighboring areas to collaborate in mutual off-track sales, as a way of boosting sales.

Meanwhile, with the introduction “listed races” mentioned just now, more and more racing by local government organizers have been joining forces in promoting off-track sales nationwide.

This has given rise to a system of nationwide off-track sales for principal races, with particular focus on listed races.

Attractive Racing Programs in 2017 (G1 & Jpn 1)



Attractive racing programs

–JBC races(L)

(JBC Classic, JBC Sprint, JBC Ladies' Classic)

Financially troubled organizers of racing by local governments got support by breeders. The 1st JBC (Japan Breeding Farms' Cup) races were held at Oi Racecourse on October 31st, 2001.

These races, based on the model of the Breeders' Cup in United States and created from an initiative by breeders, consist of three races, namely the JBC Classic, JBC Sprint and JBC Ladies' Classic.

In principle, JBC races are held in turn by organizer of local governments.



As total prize money, the Classic offers 136 million yen (≒US\$1,200,000). It is the highest amount in racing by local governments. The Sprint offers 102 million yen (≒US\$900,000), Ladies' Classic offers 69.7 million yen (≒US\$620,000).

They are due to be held at Oi racecourse on November 3rd in 2017.



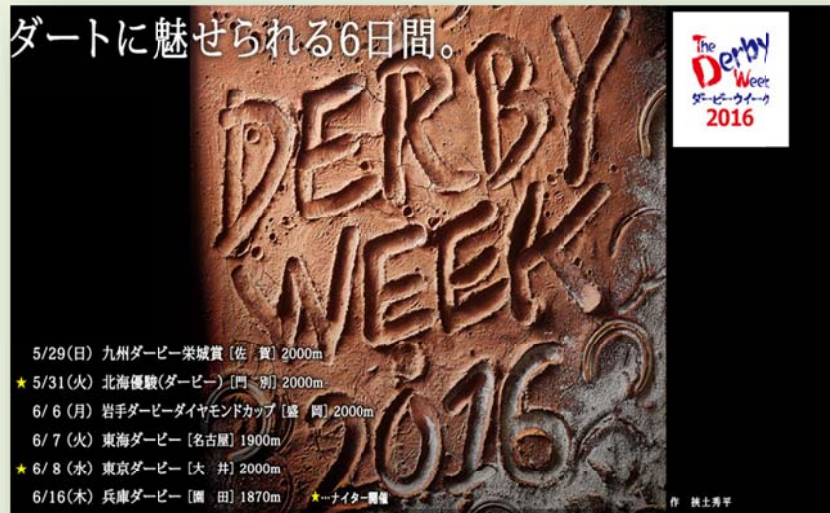
Oi Racecourse

–Series of Derby Week and other racing series–

JRA's Tokyo Yushun (Japanese Derby) is a very popular race among racing fans, as the pinnacle of racing for 3-year-olds in spring. As well as this, several different Derby races for 3-year-olds are held in racing by local governments. With the exception of some fans, however, interest in these is not very high, partly because the prize money is low compared to JRA Derby and nationwide recognition is also low.

Therefore, racing by local governments across Japan has been divided into 6 districts, and steps have been taken to adjust schedules so that “Derby races” for 3-year-olds are held over a continuous 6-day period at six racecourses. Since 2007, this event has been turned into “Series of Derby Week” to raise its profile, and we are striving to expand nationwide off-track sales.





Generally speaking, the price of fillies is less expensive than that of the price of the colts in the market. Because the prize money for local racing governments is smaller than that of JRA, in theory, the local circuit is more likely to attract fillies (rather than colts) as its racing resource. We have focused on this characteristic of local racing, and in an effort to attract and produce high-quality fillies, we have initiated the “GRANDAME-JAPAN” series since 2010. This is a coined word with the meaning "Future Grande (Great) + Dam (Mother)". In this series, NAR

selects the most outstanding performing filly/mare from each age group, and to provide incentive prize money for that filly/mare.

Also, another characteristic of NAR racing is that the majority of racecourses are shorter than 1,200 meters per lap. Hence, a race with around only one time of corner is usually on 1,000 meters. With this feature of NAR racing, we have initiated a nationwide series is called “Super Sprint Series” since 2011.

Super Sprint Series
スーパースプリントシリーズ2016

風よりも速く

スーパースプリントシリーズ2016

書：渡部裕子

Trial 6月 5日(日) 早池峰スーパースプリント [駿河] 1000m
 • Trial 6月16日(木) 川崎スパーキングスプリント [川崎] 900m
 Trial 6月21日(火) 名古屋でら馬スプリント [名古屋] 800m
 • Trial 6月23日(木) グランシャリオ門別スプリント [門別] 1000m
 Trial 6月30日(木) 園田FCスプリント [園田] 820m
 • Final 7月20日(水) 習志野きらっとスプリント [船橋] 1000m

★ ナイター開催

名物の再来を願って——
合言葉は「ロケットムスビ」

「ロケットムスビ」
高キアローグ

ロケットムスビ
レジェンドメンバー

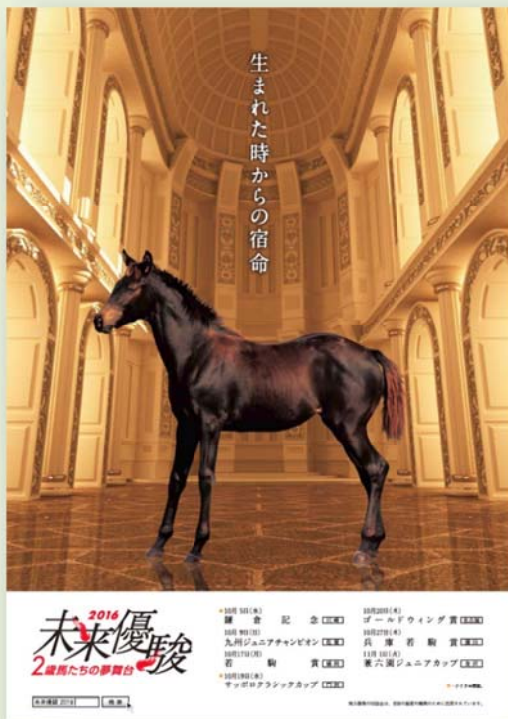
語り継がれてきた伝説は、
新たな1ページへ

GRANDAME JAPAN 2016
サンパピオン

GRANDAME-JAPAN 2016
【世代別乳馬重賞シリーズ】 グランダム・ジャパン 古馬シーズン

7.6 [水] スパーキングレディーカップ 川崎 1,000m	7.21 [水] ノースクイーンカップ 門別 1,000m	7.29 [水] 兵庫サマークイーン賞 舞田 1,700m	8.9 [水] 読売レディス杯 金沢 1,000m
8.11 [水] ブリーダーズゴールドカップ 門別 2,000m	8.28 [水] ビューチフルドリーマーカップ 水沢 1,500m	9.1 [水] 秋桜賞 名古屋 1,400m	9.19 [水] レディスプレュード 大井 1,000m

Besides these, we are taking steps to develop other plans unique to racing by local governments. The “Mirai Yushun”, in which specially selected races for 2-year-olds had been combined in a series. With these and other measures, we are striving to provide attractive horseracing programs and expand nationwide off-track sales.



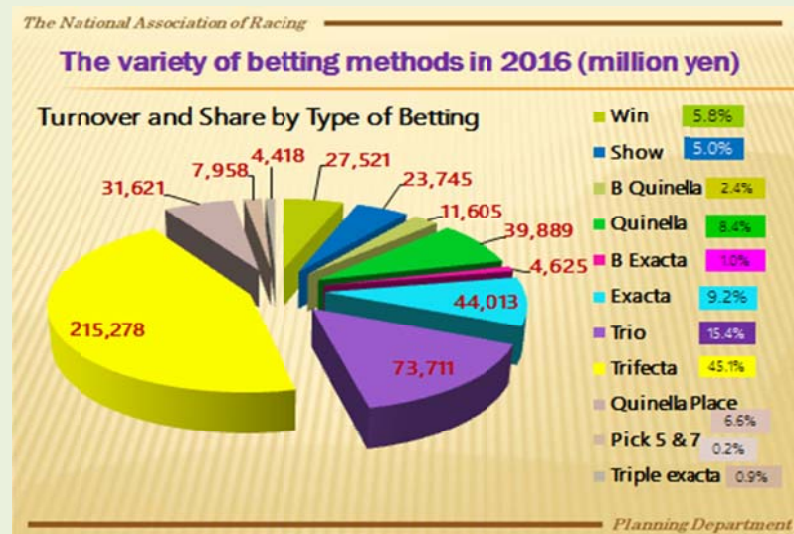
The variety of betting methods—

At present, there are eight standard types of betting available for racing by local governments. There are Win, Show, bracket number Quinella, horse number Quinella, Exacta, Quinella Place, Trio and Trifecta.

Due to differences in the functions of the totalizator system, however, there is some variance among organizers in the systems of betting available.

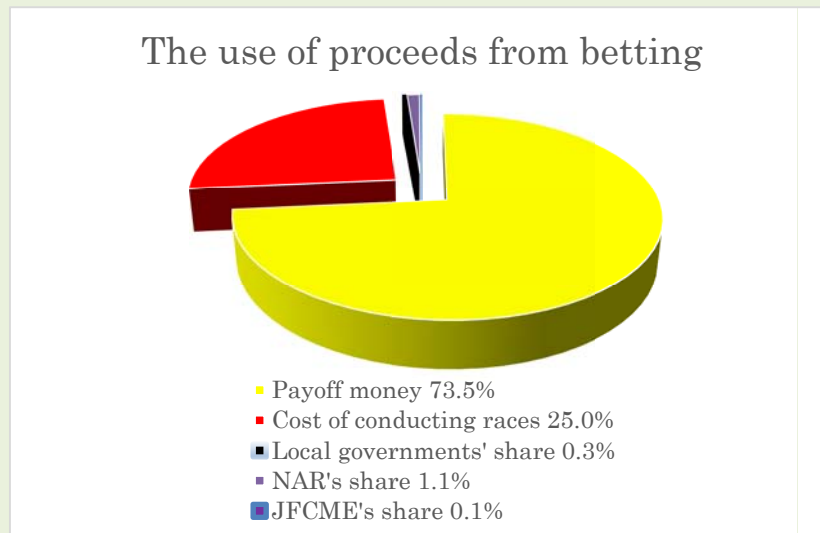
We introduced a new type of betting which can be purchased on the Internet, Pick 5 in January 2011.

But sales are still very small.



Distribution of sales profits – In the case of 2015

About the use of proceeds from betting by local governments, the deduction rate is set by each type of the bet. However, a ratio for total sales is 73.5%. Accordingly, 25% of sales proceeds are received by each organizer. 0.3% are shares of the local government. 1.1% are subsidy to NAR. 0.1% are invested to the Japan Finance Corporation for Municipal Enterprises, which is a Government sponsored corporation that provides low-interest financing to local governments.



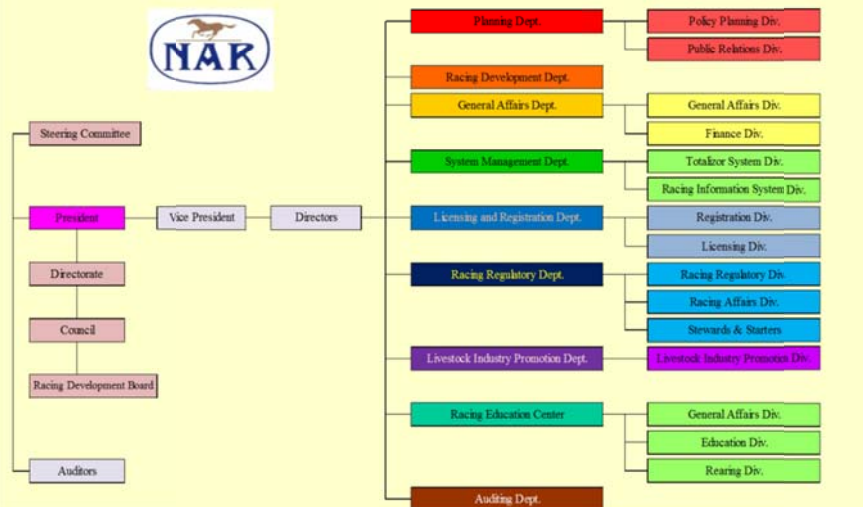
The National Association of Racing (NAR)

NAR was established in 1962 as a public entity based on the Horse Racing Law, with the objective of “Promoting the smooth conduct of racing by local governments and contributing to improvement and breeding of horses and other livestock.”

NAR currently consists of nine departments. Aside from those departments, there is an executive committee and other external board committees that discuss and decide on a variety of measures regarding the agreements with the local public authorities that host racing by local governments mainly to ensure fairness and transparency of its business.

When it receives an application of owner registration for racing by local governments, NAR examines the owner’s qualifications, obtains an evaluation from the Owner’s Registration Screening Committee and then makes a decision on whether or not to license the ownership.

Although NAR currently has approximately 4,500 registered owners, the number of new registered owners has been declining due to the long economic slump.



Currently, NAR has received registrations for approximately 10,000 racehorses for flat racing. The Horse Racing Law provides that only trainers and jockeys that have received NAR licenses can engage training or riding for racing by local governments.

NAR dispatches specialist advisors that include stewards, starters and other experts to each racing by local government's racecourses with the cooperation of local organizers. At the same time, NAR works to implement fair racing to integrate racing rules.



Horses and Persons concerned for Local Government Racing (Flat)

	Registered Horse	Owner	Trainer	Assistant Trainer	Jockey	Groom
2016	9,996	4,530	430	44	261	1,948
2015	9,929	4,545	437	40	261	1,998
2014	10,041	4,559	441	37	271	2,053
2013	10,551	4,613	440	40	267	2,097
2012	11,057	4,720	461	45	275	2,179
2011	11,292	4,851	483	49	288	2,274
2010	11,576	5,041	492	50	300	2,359
2009	11,963	5,273	498	50	303	2,404
2008	12,117	5,449	521	54	300	2,433
2007	12,696	5,694	536	55	317	2,567
2006	13,619	5,943	555	52	349	2,734

—Racing Education Center—


Furthermore, we have the Racing Education Center in Nasu, Tochigi Prefecture to educate jockey candidates for racing by local governments.

Each year, the center accepts some 15 people that have


passed testing from applicants ranging from 15-years old junior high school graduates to 20-years-old adults. The training period lasts two years and includes a five-month practical training period under the guidance of a trainer with whom the candidate will become affiliated.

Center has a track of 1100 meters in circumference with four riding grounds and a riding hall. There are uphill training track, stables where 160 horses can be stabled, a veterinary clinic, a farriery and facilities for communal living, accommodations for various activities and so on.

Racing Education Center



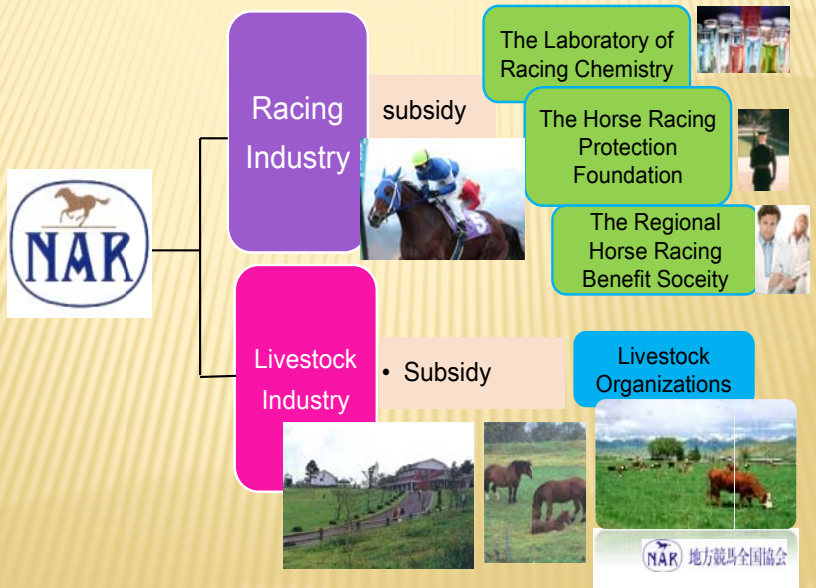
Outlook of Training for NAR Jockey			
Entrance Examination			
Orientation and familiarization with horse			
1st	Training for horseback riding	6 months	Basic training including riding on a saddle with upright body and jumping the hurdle
2nd	Training for racing	11 months	Training of 'monkey crouch' with short stirrups
3rd	Training to improve racing technique at Race Track	5 months	Improve racing technique at racetrack under trainers
4th	Training to simulated racing	2 months	Simulated race training and license examination
Graduation			



–Project for the improvement and multiplication of horses, and for the promotion of the livestock industry—NAR implements support projects aimed at livestock organizations located throughout the country in order to contribute to the improvement of breeding of horses and other livestock improvements which is one objective of racing by local governments. In 2015, NAR granted as subsidies 558 million yen in total to these 89 projects.

In addition NAR provides subsidies to the Laboratory of Racing Chemistry which conducts drug testing of race horses. NAR provides subsidies to the Horse Racing Protection Foundation of Japan which conducts investigations of crimes committed by horserace personnel. NAR provides subsidies to the Regional Horse Racing Benefit Society which operates mutual aid programs for trainers, jockeys and groom. Moreover, since 2005, support projects have been available for various measures designed to boost sales by racing by local governments. Specifically, we support the creation of nationwide data management systems, race video network systems and so on as well as the installation of new facilities enabling evening races to be held.

Promotion for Racing and Livestock Industry



—NAR GRAND PRIX—

Each year, NAR holds the “NAR GRAND PRIX”, which give horses, trainers, jockeys and so on a special award.



NAR GRAND PRIX 2016

Friendly international exchange

– International exchange races –

The first international invitation race conducted by the local government was held in 1978. Mary Bacon who is a lady jockey of The United States rode at Oi Racecourse. Steve Cauthen jockeyed there in the following year. The international invitation races known as the “Ladies Cup” were held for four consecutive years in the first half of the 1980’s, with female jockeys from Europe, the United States, Canada and Japan competing with one another at Mizusawa, Kaminoyama and Niigata Racecourses.

During the five-year period from 1989 to 1993 at racecourses located in different regions in Japan, NAR conducted “International Queen Jockey Series”, for which Japanese female jockeys rode together with female jockeys invited from the United States, Canada, the United Kingdom, France, Australia and New Zealand, for the purpose of promoting technical exchange among female jockeys and international friendship.

During the 16 year period from 1982 to 1997, Niigata Racecourse invited jockeys from the Republic of Korea to

hold the Japan-Korea Challenge Cup races, and held exchange races, cooperating with the Republic of Korea to alternately invite jockeys from the two nations each year. In 1995, Oi Racecourse formed a relationship of friendship and cooperation with Santa Anita Park of the United States. Tokyo Metropolitan Racing Association (Oi Racecourse) invited jockeys who usually ride on the California circuit. The friendship Jockey Series has raced for several years.

In recent years, foreign jockeys who are issued short-term licenses by NAR or JRA have been increasing. They have opportunities to ride in the exchange race between JRA racing and racing by local governments including the graded dirt races and other races at local government racecourses in Japan.



Tokyo Metropolitan Racing Association (TCK) and Korea Racing Authority have been continued an international exchange race to promote development and a friendly relationship of each other's horseracing business.

In 2014, not only Japanese horses but also the Singaporean horses were invited to a race in Seoul, and was named "Asian challenge cup". The race was held at Seoul Horse Park on August, Choegang Schiller (USA) (Korean horse) won a clear-cut victory. The next race was held at Oi racecourse on October, Satono Tiger (JPN) (Japanese horse) gained speed at the inside of good position on the home straight and won.

After 2015, international exchange races have been held once a year at each racetrack.

Seoul Horse Park



Oi Racecourse



— TOKYO DAISHOTEN (G1) —
(International race)

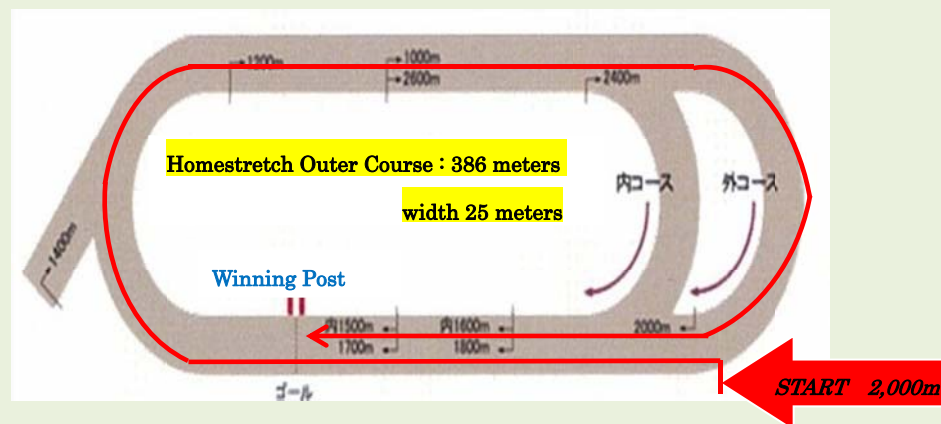
The TOKYO DAISHOTEN (Total Purse: 136 million yen Right Handed, 2,000 meters Dirt/ about 10 furlongs, 3yo & up) to be held at Oi Racecourse on 29th December, 2016 was approved as a Grade 1 race by the Japanese Graded Race Committee in 2010.

In 2016, there were no nominated horses for this race from foreign countries. After all JRA's horses were strong and occupied a high rank. "Apollo Kentucky" (JRA) won. This race was delivered to overseas two countries (Australia and New Zealand) at the first time, and accepted bets in separate pool.



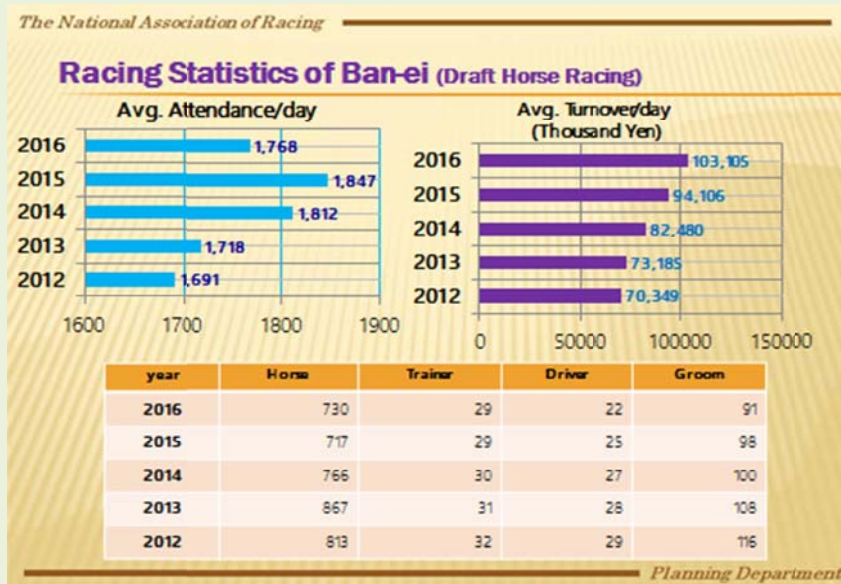
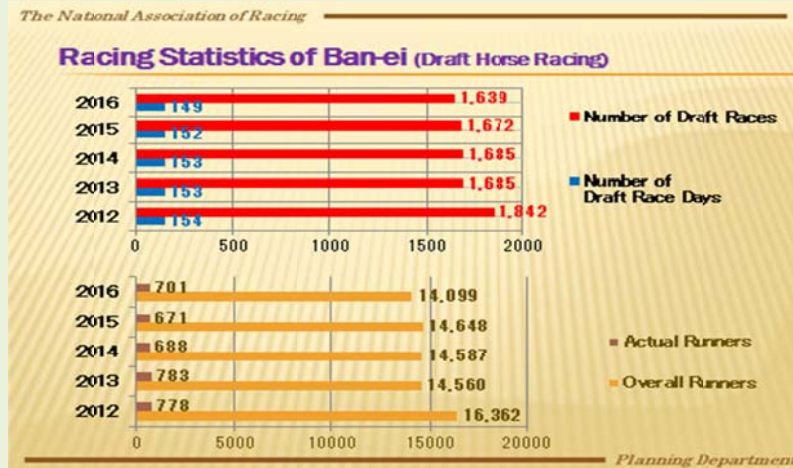
Apollo Kentucky (JPN)

OI RACECOURSE



Ban-ei (Draft Horse Racing)

In addition to flat races are unique draft races, called Ban-ei races, which are held only in Obihiro-City, Hokkaido region. These races are run by such heavy horses as the sturdy Percherons, Bretons and Belgians, which pull a sleigh weighing from about half a ton to one ton, along a 200-meter separated straight track with two humps. The dynamic Ban-ei races, which enjoy a large following, originated as a popular game among local people in horse-breeding areas in Hokkaido and Tohoku.



Draft horses registered by NAR are on the decrease year by year because of a decline in breeding. The Hokkaido government authorizes Ban-ei horse racing as the Hokkaido inheritance as the one which it should keep in the coming ages. The Ban-ei horse racing is a style of the only horse racing in the world.

Attendance and Turnover in 2016
Local Government Racing

Attendance and Turnover 2016 (Racing by Local Governments)

Racecourse		Race Days 2016	Attendance (on-course)			Turnover (on and off-course)				Turnover (off-course only)			
			Total	Daily Avg	Comparison with 2015 / day (%)	Total (thousand yen)	Comparison with 2015 (%)	Daily Avg. (thousand yen)	Comparison with 2015 / day (%)	Including telephone-betting (thousand yen)	Comparison with 2015 / day (%)	Telephone-betting only (thousand yen)	Comparison with 2015 / day (%)
Banei	Obihiro*	149	263,499	1,768	95.8	15,362,563.2	107.4	103,104.5	109.6	13,996,354.4	111.6	10,660,280.7	117.0
Hokkaido	Mombetsu	80	50,006	625	90.5	20,213,847.70	120.7	252,673.1	120.7	19,855,508.20	121.7	15,536,747.40	130.2
Iwate	Morioka	66	145,170	2,200	100.1	14,723,374.3	127.7	223,081.4	116.1	13,542,987.6	118.1	7,891,909.3	132.0
	Mizusawa	64	131,952	2,062	100.7	11,414,167.0	99.7	178,346.4	110.6	10,014,924.8	111.8	5,208,897.7	124.5
Iwate Total		130	277,122	2,132	100.7	26,137,541.3	113.7	201,058.0	114.6	23,557,912.4	116.5	13,100,807.0	131.0
Urawa		47	176,338	3,752	100.7	36,775,750.16	102.3	782,462.8	108.8	33,460,027.86	110.2	20,511,938.86	115.9
Funabashi		55	165,410	3,007	84.0	47,662,142.91	115.9	866,584.4	111.7	44,798,814.41	113.0	28,083,794.61	122.0
Oi		97	585,328	6,034	96.5	116,605,453.50	106.0	1,202,118.1	107.1	104,388,865.20	108.6	67,320,523.50	116.4
Kawasaki		66	362,917	5,499	118.6	64,308,181.15	127.7	974,366.4	118.0	58,769,711.15	119.3	38,030,123.75	129.4
Kanazawa		81	243,789	3,010	102.7	15,248,629.1	121.8	188,254.7	117.3	11,967,922.5	122.9	9,289,528.3	135.4
Kasamatsu		99	97,120	981	96.9	18,320,292.0	119.1	185,053.5	115.5	17,023,848.9	117.2	11,964,125.1	128.3
Nagoya		112	165,245	1,475	107.5	26,937,557.9	121.6	240,513.9	121.6	24,701,190.4	123.3	17,994,074.4	132.8
Hyogo	Sonoda	162	418,615	2,584	97.6	50,366,758.9	119.4	310,905.9	118.7	44,017,712.4	122.5	32,697,333.1	131.9
	Himeji	0	0			0.0				0.0		0.0	
Hyogo Total		162	418,615	2,584	97.6	50,366,758.9	119.4	310,905.9	118.7	44,017,712.4	122.5	32,697,333.1	131.9
Kochi		103	71,350	693	97.5	22,558,662.1	130.1	219,016.1	132.7	21,415,478.5	135.1	19,391,307.0	137.6
Saga		105	325,535	3,100	99.4	16,725,403.3	103.2	159,289.6	108.2	13,751,036.4	110.6	9,780,836.6	117.6
Grand Total		1,286	3,202,274	2,490	99.9	477,222,783.22	114.4	371,090.8	114.5	431,704,382.72	116.4	294,361,420.32	125.4

Graded Race by Local Governments in 2016

No.	Race name	Gr.	Racecourse	Date	Age/Sex	Surface & Distance (m)	Assigning Weights	1st purse	Total purse	Winner	Turnover
								(yen)	(yen)		(yen)
1	Tokyo Daishoten	G I	Oi	Dec. 29	3up	D2000	Weight for Age	80,000,000	136,000,000	Apollo Kentucky*	3,732,695,200
total								80,000,000	136,000,000		3,732,695,200

Listed Races by Local Governments in 2016

No.	Race name	Jpn	Racecourse	Date	Age/Sex	Surface & Distance (m)	Assigning Weights	1st purse	Total purse	Winner	Turnover
								(yen)	(yen)		(yen)
1	TCK Jo-o Hai	III	Oi	Jan. 13	4up f/m	D1800	Special Weight	22,000,000	37,400,000	White Fugue*	481,653,800
2	Kawasaki Kinen	I	Kawasaki	Jan. 27	4up	D2100	Weight for Age	60,000,000	102,000,000	Hokko Tarumae*	951,117,900
3	Saga Kinen	III	Saga	Feb. 11	4up	D2000	Special Weight	23,000,000	34,500,000	Strong Souther*	345,950,600
4	Empress Hai	II	Kawasaki	Mar. 2	4up f/m	D2100	Special Weight	35,000,000	59,500,000	Amour Briller*	432,126,000
5	Diolite Kinen	II	Funabashi	Mar. 9	4up	D2400	Weight for Age	32,000,000	54,400,000	Chrysolite*	435,195,800
6	Kurofune Sho	III	Kochi	Mar. 15	4up	D1400	Special Weight	21,000,000	31,500,000	Danon Legend*	287,274,500
7	Nagoya Daishoten	III	Nagoya	Mar. 17	4up	D1900	Special Weight	21,000,000	31,500,000	Awardee*	274,163,600
8	Tokyo Sprint	III	Oi	Apr. 6	4up	D1200	Special Weight	27,000,000	45,900,000	Corin Berry*	614,266,100
9	Marine Cup	III	Funabashi	Apr. 13	3up f/m	D1600	Special Weight	21,000,000	35,700,000	Vita Allegria*	152,281,800
10	Kakitsubata Kinen	III	Nagoya	May 3	4up	D1400	Special Weight	21,000,000	31,500,000	Nobo Baccara*	401,281,700
11	Hyogo Championship	II	Sonoda	May 4	3yo	D1870	Weight for Age	28,000,000	42,000,000	K T Brave*	369,625,400
12	Kashiwa Kinen	I	Funabashi	May 5	4up	D1600	Weight for Age	60,000,000	102,000,000	Copano Rickey*	1,230,230,800
13	Sakitama Hai	II	Urawa	June 1	4up	D1400	Special Weight	31,000,000	52,700,000	Sorte	432,113,700
14	Hokkaido Sprint Cup	III	Mombetsu	June 9	3up	D1200	Special Weight	22,000,000	33,000,000	Danon Legend*	267,896,800
15	Kanto Oaks	II	Kawasaki	June 15	3yo f	D2100	Weight for Age	32,000,000	54,400,000	Tiny Dancer*	495,606,300
16	Teio Sho	I	Oi	June 29	4up	D2000	Weight for Age	60,000,000	102,000,000	Copano Rickey*	1,711,081,700
17	Sparkling Lady Cup	III	Kawasaki	July 6	3up f/m	D1600	Special Weight	25,000,000	42,500,000	White Fugue*	471,109,300
18	Japan Dirt Derby	I	Oi	July 13	3yo	D2000	Weight for Age	45,000,000	76,500,000	Kyoei Gere*	1,144,783,100
19	Mercury Cup	III	Morioka	July 18	3up	D2000	Special Weight	23,000,000	34,500,000	Strong Souther*	507,556,600
20	Breeders' Gold Cup	III	Mombetsu	Aug. 11	3up f/m	D2000	Special Weight	25,000,000	37,500,000	Amour Briller*	258,947,700
21	Cluster Cup	III	Morioka	Aug. 16	3up	D1200	Special Weight	23,000,000	34,500,000	Danon Legend*	320,036,100
22	Summer Champion	III	Saga	Aug. 18	3up	D1400	Handicap	21,000,000	31,500,000	Graceful Leap*	192,253,400
23	Tele Tama Hai Oval Sprint	III	Urawa	Sep. 15	3up	D1400	Special Weight	21,000,000	35,700,000	Laser Bullet*	291,762,300
24	Ladies' Prelude	II	Oi	Sep. 19	3up f/m	D1800	Special Weight	31,000,000	52,700,000	Tamano Brunette*	654,509,200
25	Tokyo Hai	II	Oi	Sep. 22	3up	D1200	Special Weight	35,000,000	59,500,000	Dream Valentino*	598,686,800
26	Nippon TV Hai	II	Funabashi	Sep. 28	3up	D1800	Special Weight	32,000,000	54,400,000	Awardee*	393,118,800
27	Hakusan Daishoten	III	Kanazawa	Oct. 4	3up	D2100	Special Weight	21,000,000	31,500,000	K T Brave*	256,060,800
28	Mile Championship Nambu Hai	I	Morioka	Oct. 10	3up	D1600	Weight for Age	45,000,000	67,500,000	Copano Rickey*	641,135,800
29	Edelweiss Sho	III	Mombetsu	Oct. 13	2yo f	D1200	Weight for Age	20,000,000	30,000,000	Rieno Tesoro*	169,247,900
30	Hokkaido Nisai Yushun	III	Mombetsu	Nov. 1	2yo	D1800	Weight for Age	20,000,000	30,000,000	Epicharis*	208,328,400
31	JBC Classic	I	Kawasaki	Nov. 3	3up	D2100	Weight for Age	80,000,000	136,000,000	Awardee*	1,617,341,100
32	JBC Sprint	I	Kawasaki	Nov. 3	3up	D1400	Weight for Age	60,000,000	102,000,000	Danon Legend*	1,015,377,000
33	JBC Ladies' Classic	I	Kawasaki	Nov. 3	3up f/m	D1600	Weight for Age	41,000,000	69,700,000	White Fugue*	851,709,200
34	Urawa Kinen	II	Urawa	Nov. 22	3up	D2000	Special Weight	35,000,000	59,500,000	K T Brave*	373,554,800
35	Hyogo Junior Grand Prix	II	Sonoda	Nov. 23	2yo	D1400	Weight for Age	22,000,000	33,000,000	Rose Juliet	357,533,900
36	Queen Sho	III	Funabashi	Dec. 7	3up f/m	D1800	Handicap	21,000,000	35,700,000	Trois Bonheur*	348,961,700
37	Zen-Nippon Nisai Yushun	I	Kawasaki	Dec. 14	2yo	D1600	Weight for Age	35,000,000	59,500,000	Rieno Tesoro*	592,151,900
38	Nagoya Grand Prix	II	Nagoya	Dec. 15	3up	D2500	Special Weight	31,000,000	46,500,000	Amour Briller*	338,172,800
39	Hyogo Gold Trophy	III	Sonoda	Dec. 28	3up	D1400	Handicap	21,000,000	31,500,000	Nishiken Monofu*	415,221,000
Total		2016(JPN) I -9R II -11R III -19R						1,249,000,000	2,041,700,000		20,899,426,100

An asterisk (*) indicates a registered horse by JRA.



THE NATIONAL ASSOCIATION OF RACING

2-2-1 AZABUDAI MINATO-KU, TOKYO 106-8639 , JAPAN

Phone : +81-3-3583-6849 Fax : +81-3-3585-0481

e-mail : intl@nar.keiba.go.jp URL : <http://www.keiba.go.jp/>